



Student Data Book

Fall 2014

Section B

Student Demographic Characteristics

Section B: Student Demographic Characteristics

Table	15A & 15B	Distribution by Gender Fall 2010-2014
Figure	3	Gender Distribution Fall 1986-2014
Table	16	Gender Distribution by Class
Table	17	Gender Distribution by College
Table	18A & 18B	Age Distribution Fall 2010-2014
Table	19	Age Distribution by Student Level
Table	20	Racial/Ethnic Distribution by Student Level Fall 2010-2014
Figure	4	Racial/Ethnic Distribution Fall 2010-2014
Table	21A	Two or More Races: All Races Mentioned by Level
Table	21B	Hispanic Ethnicity: All Races Mentioned by Level
Table	22	Racial/Ethnic Distribution by Class
Table	23	Racial/Ethnic and Gender Distribution by College
Table	24	Distribution by Geographic Location 2010-2014
Table	25	Enrollment of Illinois Residents by County
Table	26	U.S. Residents by State and Student Level

Section B: Student Demographic Characteristics

**Table 15A: Distribution by Gender
Undergraduate, Graduate and Professional Students
Fall 2010-2014**

	Men		Women		Total
	N	% of Total	N	% of Total	N
2010	12,316	45.1%	14,993	54.9%	27,309
2011	12,388	44.9%	15,192	55.1%	27,580
2012	12,576	45.7%	14,936	54.3%	27,512
2013	12,713	46.1%	14,876	53.9%	27,589
2014	12,794	46.4%	14,769	53.6%	27,563

**Table 15B: Distribution by Gender
All Students
Fall 2010-2014**

	Men		Women		Total
	N	% of Total	N	% of Total	N
2010	12,511	44.9%	15,339	55.1%	27,850
2011	12,575	44.8%	15,516	55.2%	28,091
2012	12,705	45.6%	15,170	54.4%	27,875
2013	12,860	45.9%	15,178	54.1%	28,038
2014	12,959	46.3%	15,010	53.7%	27,969

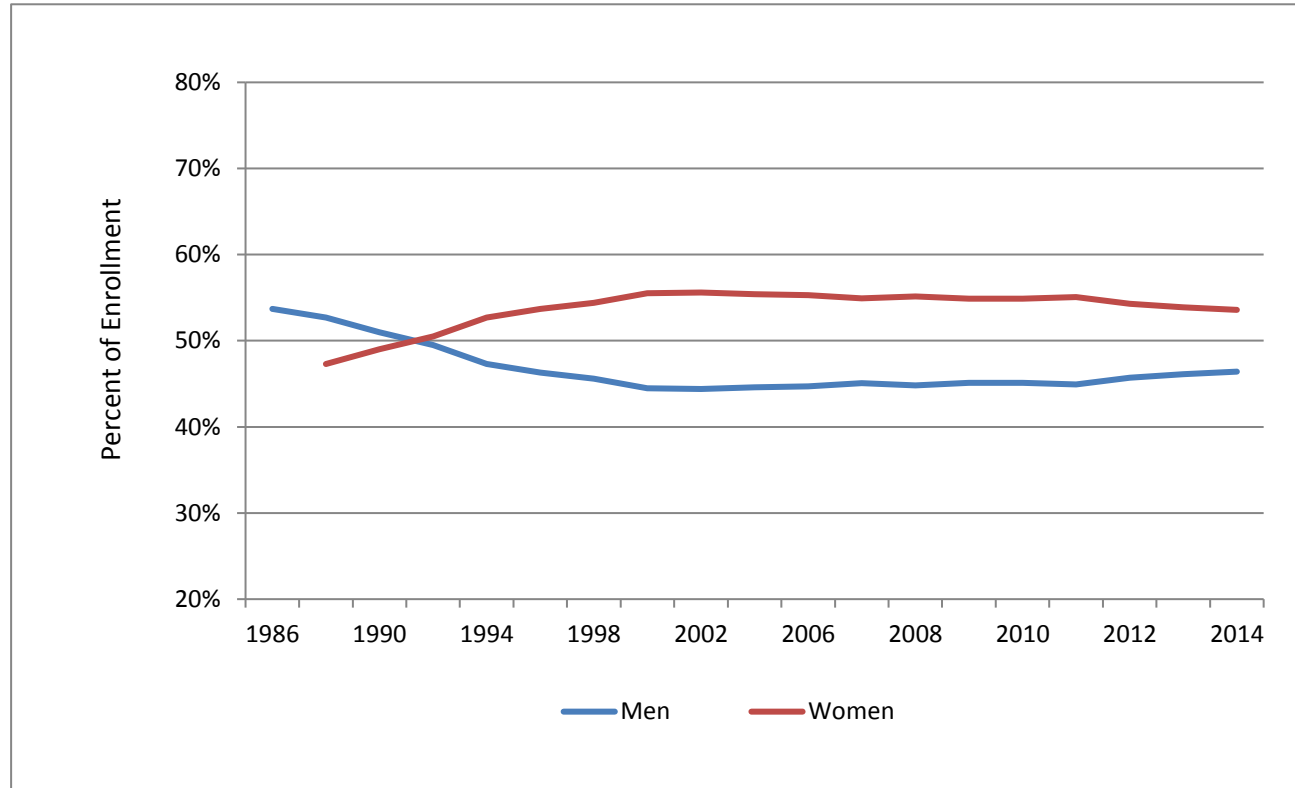
Notes:

All Students includes all programs under the School of Continuing Studies and contract programs administered separately by the colleges.

Percentages may not add to 100 due to rounding.

Section B: Student Demographic Characteristics

Figure 3: Gender Distribution
Fall 1986-2014



Section B: Student Demographic Characteristics

**Table 16: Gender Distribution by Class
Fall 2014**

		Men		Women		Total
		<u>N</u>	<u>% of Class</u>	<u>N</u>	<u>% of Class</u>	<u>N</u>
Undergraduate	Freshman	1,951	48.4%	2,084	51.6%	4,035
	Sophomore	1,526	49.1%	1,580	50.9%	3,106
	Junior	1,951	48.8%	2,048	51.2%	3,999
	Senior	2,860	52.0%	2,635	48.0%	5,495
	Nondegree	40	55.6%	32	44.4%	72
	Subtotal	8,328	49.8%	8,379	50.2%	16,707
Graduate	Master's	1,815	37.0%	3,084	63.0%	4,899
	Doctorate	1,153	46.1%	1,349	53.9%	2,502
	Nondegree	180	35.2%	331	64.8%	511
	Subtotal	3,148	39.8%	4,764	60.2%	7,912
Professional	Doctorate	1,280	44.5%	1,594	55.5%	2,874
	Advanced Certificate	38	54.3%	32	45.7%	70
	Subtotal	1,318	44.8%	1,626	55.2%	2,944
Cont. Studies/Contract		165	40.6%	241	59.4%	406
Total		12,959	46.3%	15,010	53.7%	27,969

Notes:

Cont. Studies/Contract includes all programs under the School of Continuing Studies and contract programs administered separately by the colleges.

Percentages may not add to 100 due to rounding.

Section B: Student Demographic Characteristics

**Table 17: Gender Distribution by College
Fall 2014**

	Men		Women		Total
	<u>N</u>	<u>% of College</u>	<u>N</u>	<u>% of College</u>	<u>N</u>
Applied Health Sciences	399	42.0%	550	58.0%	949
Arch, Design & the Arts	535	55.6%	427	44.4%	962
Business Administration	1,381	59.3%	948	40.7%	2,329
Dentistry	186	48.4%	198	51.6%	384
Education	40	14.2%	242	85.8%	282
Engineering	2,297	84.3%	427	15.7%	2,724
Graduate	3,156	39.6%	4,819	60.4%	7,975
Liberal Arts & Sciences	3,611	39.8%	5,467	60.2%	9,078
Medicine	719	52.8%	642	47.2%	1,361
Nursing	82	14.4%	487	85.6%	569
Pharmacy	339	41.7%	474	58.3%	813
Public Health	8	11.4%	62	88.6%	70
Urban Planning	41	61.2%	26	38.8%	67
Cont. Studies/Contract	165	40.6%	241	59.4%	406
Total	12,959	46.3%	15,010	53.7%	27,969

Notes:

All graduate level students have been placed into the Graduate College. Professional level students are classified by their college.

Cont. Studies/Contract includes all programs under the School of Continuing Studies and contract programs administered separately by the colleges.

Percentages may not add to 100 due to rounding.

Section B: Student Demographic Characteristics

**Table 18A: Age Distribution
Undergraduate, Graduate and Professional Students
Fall 2010-2014**

	2010		2011		2012		2013		2014	
	<u>N</u>	<u>%</u>	<u>N</u>	<u>%</u>	<u>N</u>	<u>%</u>	<u>N</u>	<u>%</u>	<u>N</u>	<u>%</u>
22 and Under	14,418	52.8%	14,468	52.5%	14,245	51.8%	14,154	51.3%	14,264	51.8%
23 - 24	3,385	12.4%	3,463	12.6%	3,554	12.9%	3,652	13.2%	3,605	13.1%
25 - 29	5,167	18.9%	5,116	18.5%	5,081	18.5%	5,040	18.3%	5,082	18.4%
30 and Over	4,339	15.9%	4,533	16.4%	4,632	16.8%	4,743	17.2%	4,612	16.7%
Total	27,309	100%	27,580	100%	27,512	100%	27,589	100%	27,563	100%

**Table 18B: Age Distribution
All Students
Fall 2010-2014**

	2010		2011		2012		2013		2014	
	<u>N</u>	<u>%</u>	<u>N</u>	<u>%</u>	<u>N</u>	<u>%</u>	<u>N</u>	<u>%</u>	<u>N</u>	<u>%</u>
22 and Under	14,432	51.8%	14,489	51.6%	14,265	51.2%	14,189	50.6%	14,301	51.1%
23 - 24	3,471	12.5%	3,529	12.6%	3,607	12.9%	3,728	13.3%	3,704	13.2%
25 - 29	5,354	19.2%	5,258	18.7%	5,181	18.6%	5,168	18.4%	5,206	18.6%
30 and Over	4,593	16.5%	4,815	17.1%	4,822	17.3%	4,953	17.7%	4,758	17.0%
Total	27,850	100%	28,091	100%	27,875	100%	28,038	100%	27,969	100%

Notes:

All Students includes all programs under the School of Continuing Studies and contract programs administered separately by the colleges.

Percentages may not add to 100 due to rounding.

Section B: Student Demographic Characteristics

**Table 19: Age Distribution by Student Level
Fall 2014**

Age	Undergraduate		Graduate		Professional		Cont. Studies/ Contract		Total	
	<u>N</u>	<u>%</u>	<u>N</u>	<u>%</u>	<u>N</u>	<u>%</u>	<u>N</u>	<u>%</u>	<u>N</u>	<u>%</u>
22 and Under	13,407	80.2%	544	6.9%	313	10.6%	37	9%	14,301	51.1%
23 - 24	1,489	8.9%	1,258	15.9%	858	29.1%	99	24.4%	3,704	13.2%
25 - 29	1,111	6.6%	2,746	34.7%	1,225	41.6%	124	30.5%	5,206	18.6%
30 and Over	700	4.2%	3,364	42.5%	548	18.6%	146	36.0%	4,758	17.0%
Total	16,707	100%	7,912	100%	2,944	100%	406	100%	27,969	100%
Mean Age	21.3		30.8		26.8		29.3		24.7	

Notes:

Cont. Studies/Contract includes all programs under the School of Continuing Studies and contract programs administered separately by the colleges.

Percentages may not add to 100 due to rounding.

Section B: Student Demographic Characteristics

**Table 20: Racial/Ethnic Distribution by Student Level
Fall 2010-2014**

		Am. Indian & Alaska Native		Asian		Black/African American		Hispanic/ Latino		Native HI or Pacific Islander		White		Two or More Races		International		Unknown		Total	
		N	%	N	%	N	%	N	%	N	%	N	%	N	%	N	%	N	%	N	%
2010	Ugrad.	24	0.1%	3,576	21.3%	1,392	8.3%	3,386	20.2%	76	0.5%	7,451	44.4%	344	2.0%	241	1.4%	300	1.8%	16,790	100%
	Grad.	8	0.1%	626	7.9%	694	8.8%	619	7.8%	11	0.1%	4,262	53.8%	110	1.4%	1,389	17.5%	206	2.6%	7,925	100%
	Prof.	3	0.1%	767	29.6%	189	7.3%	268	10.3%	4	0.2%	1,233	47.5%	48	1.9%	33	1.3%	49	1.9%	2,594	100%
	CS/Contr.	2	0.4%	15	2.8%	32	5.9%	35	6.5%	0	0.0%	120	22.2%	1	0.2%	302	55.8%	34	6.3%	541	100%
	Total	37	0.1%	4,984	17.9%	2,307	8.3%	4,308	15.5%	91	0.3%	13,066	46.9%	503	1.8%	1,965	7.1%	589	2.1%	27,850	100%
2011	Ugrad.	22	0.1%	3,605	21.3%	1,361	8.0%	3,711	21.9%	86	0.5%	7,173	42.4%	371	2.2%	236	1.4%	346	2.0%	16,911	100%
	Grad.	7	0.1%	649	8.1%	703	8.8%	627	7.8%	10	0.1%	4,175	52.1%	120	1.5%	1,452	18.1%	269	3.4%	8,012	100%
	Prof.	4	0.2%	747	28.1%	189	7.1%	259	9.7%	8	0.3%	1,291	48.6%	48	1.8%	44	1.7%	67	2.5%	2,657	100%
	CS/Contr.	1	0.2%	13	2.5%	36	7.0%	36	7.0%	0	0.0%	102	20.0%	0	0.0%	271	53.0%	52	10.2%	511	100%
	Total	34	0.1%	5,014	17.8%	2,289	8.1%	4,633	16.5%	104	0.4%	12,741	45.4%	539	1.9%	2,003	7.1%	734	2.6%	28,091	100%
2012	Ugrad.	21	0.1%	3,656	21.9%	1,339	8.0%	3,950	23.7%	79	0.5%	6,664	40.0%	407	2.4%	265	1.6%	290	1.7%	16,671	100%
	Grad.	6	0.1%	657	8.1%	685	8.4%	628	7.7%	11	0.1%	4,078	50.2%	131	1.6%	1,665	20.5%	258	3.2%	8,119	100%
	Prof.	3	0.1%	772	28.4%	204	7.5%	292	10.7%	9	0.3%	1,285	47.2%	57	2.1%	45	1.7%	55	2.0%	2,722	100%
	CS/Contr.	1	0.3%	11	3.0%	17	4.7%	31	8.5%	1	0.3%	76	20.9%	0	0.0%	196	54.0%	30	8.3%	363	100%
	Total	31	0.1%	5,096	18.3%	2,245	8.1%	4,901	17.6%	100	0.4%	12,103	43.4%	595	2.1%	2,171	7.8%	633	2.3%	27,875	100%
2013	Ugrad.	24	0.1%	3,737	22.4%	1,303	7.8%	4,120	24.7%	69	0.4%	6,304	37.8%	410	2.5%	350	2.1%	343	2.1%	16,660	100%
	Grad.	6	0.1%	677	8.3%	672	8.2%	696	8.5%	16	0.2%	3,969	48.5%	157	1.9%	1,745	21.3%	248	3.0%	8,186	100%
	Prof.	5	0.2%	776	28.3%	200	7.3%	310	11.3%	8	0.3%	1,284	46.8%	64	2.3%	37	1.3%	59	2.2%	2,743	100%
	CS/Contr.	0	0.0%	15	3.3%	22	4.9%	36	8.0%	0	0.0%	119	26.5%	2	0.4%	236	52.6%	19	4.2%	449	100%
	Total	35	0.1%	5,205	18.6%	2,197	7.8%	5,162	18.4%	93	0.3%	11,676	41.6%	633	2.3%	2,368	8.4%	669	2.4%	28,038	100%
2014	Ugrad.	18	0.1%	3,800	22.7%	1,316	7.9%	4,410	26.4%	44	0.3%	5,982	35.8%	417	2.5%	414	2.5%	306	1.8%	16,707	100%
	Grad.	8	0.1%	656	8.3%	656	8.3%	685	8.7%	10	0.1%	3,702	46.8%	118	1.5%	1,866	23.6%	211	2.7%	7,912	100%
	Prof.	3	0.1%	758	25.7%	211	7.2%	317	10.8%	8	0.3%	1,448	49.2%	81	2.8%	50	1.7%	68	2.3%	2,944	100%
	CS/Contr.	0	0.0%	15	3.7%	11	2.7%	23	5.7%	1	0.2%	79	19.5%	2	0.5%	266	65.5%	9	2.2%	406	100%
	Total	29	0.1%	5,229	18.7%	2,194	7.8%	5,435	19.4%	63	0.2%	11,211	40.1%	618	2.2%	2,596	9.3%	594	2.1%	27,969	100%

Notes:

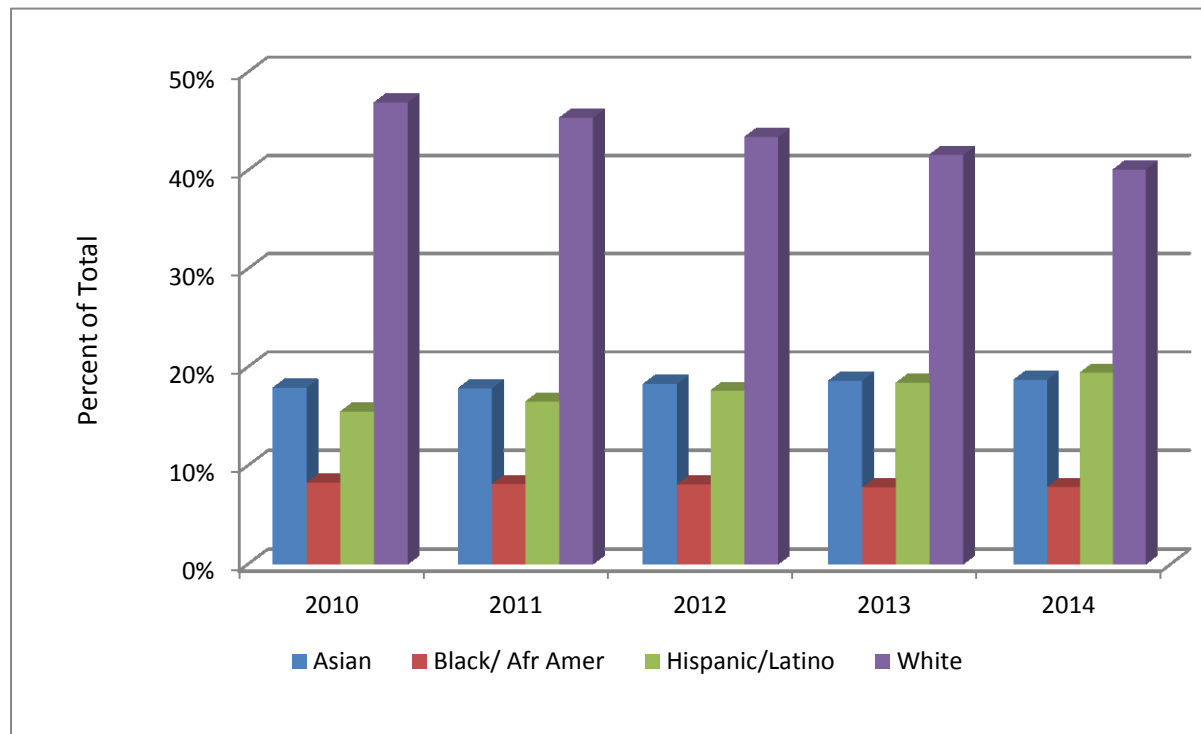
Beginning Fall 2010, new ethnicity and race categories were created in response to federal reporting requirements. The implementation of these new categories included a survey of all current students to verify ethnicity and race. Changes include the ability of respondents to indicate Hispanic ethnicity separately from racial origin and to identify more than one race category if applicable. The federal guidelines also require separating the category 'Asian or Pacific Islander' into two groups, one for 'Asian' and one for 'Native Hawaiian or Other Pacific Islander'.

Students who are in the U.S. on a visa or temporary basis are defined as International.

Cont. Studies/Contract includes all programs under the School of Continuing Studies and contract programs administered separately by the colleges.

Section B: Student Demographic Characteristics

**Figure 4: Racial/Ethnic Distribution
Fall 2010-2014**



See Table 20 for categories excluded from this table.

Section B: Student Demographic Characteristics

**Table 21A: Two or More Races: All Races Mentioned by Level
Fall 2014**

			Total Campus		Undergraduates		Graduates		Professional		Cont. Studies/ Contract
American Indian/ Alaska Native	N		128		77		31		19		1
	%		20.7%		18.5%		26.3%		23.5%		
Asian	N		368		243		61		63		1
	%		59.5%		58.3%		51.7%		77.8%		
Black/African American	N		221		161		44		15		1
	%		35.8%		38.6%		37.3%		18.5%		
Native HI or other Pacific Islander	N		85		73		8		4		0
	%		13.8%		17.5%		6.8%		4.9%		
White	N		485		314		107		62		2
	%		78.5%		75.3%		90.7%		76.5%		
Total Classified as Two or More Races	N		618		417		118		81		2
	%		100.0%		100.0%		100.0%		100.0%		

Notes:

Beginning Fall 2010, new ethnicity and race categories were created in response to federal reporting requirements. See note on Table 20 for more information. Under federal guidelines, non-Hispanic students who select more than one race category are reported under 'Two or More Races'.

The table above shows all the races mentioned by these students.

Percentages will exceed 100. Multiple responses allowed.

Section B: Student Demographic Characteristics

**Table 21B: Hispanic/Latino Category: All Races Mentioned by Level
Fall 2014**

		Total Campus	Undergraduates	Graduates	Professional	Cont. Studies/ Contract
American Indian/ Alaska Native	N	259	202	46	9	2
	%	4.8%	4.6%	6.7%	2.8%	8.7%
Asian	N	101	78	11	12	0
	%	1.9%	1.8%	1.6%	3.8%	--
Black/African American	N	196	149	39	8	0
	%	3.6%	3.4%	5.7%	2.5%	0.0%
Native HI or other Pacific Islander	N	46	42	3	1	0
	%	0.8%	1.0%	0.4%	0.3%	--
White	N	2,066	1,578	340	136	12
	%	38.0%	35.8%	49.6%	42.9%	52.2%
No Races Mentioned	N	2,950	2,489	291	159	11
	%	54.3%	56.4%	42.5%	50.2%	47.8%
Total	N	5,435	4,410	685	317	23
	%	100.0%	100.0%	100.0%	100.0%	100.0%

Notes:

Beginning Fall 2010, new ethnicity and race categories were created in response to federal reporting requirements. See note on Table 20 for more information. Under federal guidelines, Hispanic/Latino students are reported under 'Hispanic/Latino' only.

The table above shows all the races mentioned by Hispanic/Latino students.

Percentages may exceed 100. Multiple responses allowed.

Section B: Student Demographic Characteristics

**Table 22: Racial/Ethnic Distribution by Class
Fall 2014**

Racial/Ethnic Group	Fresh.	Soph.	Junior	Senior	Non-degree	Ugrad. Total	Grad.	Prof.	Cont. St./Contract	Grand Total
Am. Indian & Alaska Native	1	5	1	11	0	18	8	3	0	29
<i>% of Class</i>	0.0%	0.2%	0.0%	0.2%	0.0%	0.1%	0.1%	0.1%	0.0%	0.1%
Asian	951	800	882	1,166	1	3,800	656	758	15	5,229
<i>% of Class</i>	23.6%	25.8%	22.1%	21.2%	1.4%	22.7%	8.3%	25.7%	3.7%	18.7%
Black/African American	402	238	283	390	3	1,316	656	211	11	2,194
<i>% of Class</i>	10.0%	7.7%	7.1%	7.1%	4.2%	7.9%	8.3%	7.2%	2.7%	7.8%
Hispanic/Latino	1,329	824	1,068	1,178	11	4,410	685	317	23	5,435
<i>% of Class</i>	32.9%	26.5%	26.7%	21.4%	15.3%	26.4%	8.7%	10.8%	5.7%	19.4%
Native HI or Pacific Islander	1	9	11	23	0	44	10	8	1	63
<i>% of Class</i>	0.0%	0.3%	0.3%	0.4%	0.0%	0.3%	0.1%	0.3%	0.2%	0.2%
White	1,111	1,038	1,475	2,349	9	5,982	3,702	1,448	79	11,211
<i>% of Class</i>	27.5%	33.4%	36.9%	42.7%	12.5%	35.8%	46.8%	49.2%	19.5%	40.1%
Two or More Races	98	70	109	135	5	417	118	81	2	618
<i>% of Class</i>	2.4%	2.3%	2.7%	2.5%	6.9%	2.5%	1.5%	2.8%	0.5%	2.2%
International	97	70	93	111	43	414	1,866	50	266	2,596
<i>% of Class</i>	2.4%	2.3%	2.3%	2.0%	59.7%	2.5%	23.6%	1.7%	65.5%	9.3%
Unknown	45	52	77	132	0	306	211	68	9	594
<i>% of Class</i>	1.1%	1.7%	1.9%	2.4%	0.0%	1.8%	2.7%	2.3%	2.2%	2.1%
Total	4,035	3,106	3,999	5,495	72	16,707	7,912	2,944	406	27,969
<i>% of Class</i>	100.0%	100.0%	100.0%	100.0%	100.0%	100.0%	100.0%	100.0%	100.0%	100.0%

Notes: Beginning Fall 2010, new ethnicity and race categories were created in response to federal reporting requirements. See note on Table 20 for more information.

Students who are in the U.S. on a visa or temporary basis are defined as International.

Cont. Studies/Contract includes all programs under the School of Continuing Studies and contract programs administered separately by the colleges.

Percentages may not add to 100 due to rounding.

Section B: Student Demographic Characteristics

**Table 23: Racial/Ethnic and Gender Distribution by College
Fall 2014**

	Am. Indian & Alaska Native		Asian		Black or Afr. American		Hispanic/ Latino		Native HI or Pacific Islander		White		Two or More Races		International		Unknown		Total	
	<i>M</i>	<i>W</i>	<i>M</i>	<i>W</i>	<i>M</i>	<i>W</i>	<i>M</i>	<i>W</i>	<i>M</i>	<i>W</i>	<i>M</i>	<i>W</i>	<i>M</i>	<i>W</i>	<i>M</i>	<i>W</i>	<i>M</i>	<i>W</i>	<i>M</i>	<i>W</i>
AHS: Prof.	0	0	4	7	2	1	3	2	0	0	35	88	3	0	0	0	2	7	49	105
AHS: Ugrad.	0	0	117	91	12	36	59	75	4	1	133	225	12	7	5	8	8	2	350	445
Arch, Dsgn & Arts	1	2	48	49	58	37	180	106	2	0	211	191	18	17	6	18	11	7	535	427
Business Admin.	0	0	320	223	76	72	334	259	3	1	533	301	32	21	53	54	30	17	1,381	948
Dent.: Adv. Cert.	0	0	4	5	0	0	4	1	0	0	22	21	1	0	6	4	1	1	38	32
Dent.: DDS	0	0	38	72	13	8	11	18	1	1	82	64	3	1	0	0	0	2	148	166
Education	0	0	5	36	9	20	17	106	0	0	6	64	2	9	0	1	1	6	40	242
Engineering	5	0	544	115	104	38	434	83	9	0	991	157	53	11	97	16	60	7	2,297	427
Graduate	4	4	245	418	143	515	236	450	2	8	1,328	2,421	41	80	1,061	807	96	116	3,156	4,819
LAS	2	7	925	1,236	232	556	989	1,684	11	11	1,260	1,656	75	139	57	94	60	84	3,611	5,467
Medicine	1	1	178	143	31	78	110	119	2	1	352	264	23	23	0	0	22	13	719	642
Nursing	0	1	17	71	12	48	12	44	0	2	32	283	3	14	0	12	6	12	82	487
Pharmacy	0	1	111	174	26	29	23	18	1	1	157	209	12	9	7	22	2	11	339	474
Public Health	0	0	2	11	1	20	2	12	0	1	3	15	0	3	0	0	0	0	8	62
Urban Planning	0	0	3	2	4	2	12	9	0	0	18	10	1	3	2	0	1	0	41	26
Cont. St./Contract	0	0	3	12	1	10	6	17	0	1	13	66	0	2	140	126	2	7	165	241
Total	13	16	2,564	2,665	724	1,470	2,432	3,003	35	28	5,176	6,035	279	339	1,434	1,162	302	292	12,959	15,010

Notes:

Beginning Fall 2010, new ethnicity and race categories were created in response to federal reporting requirements. The implementation of these new categories included a survey of all current students to verify ethnicity and race. Changes include the ability of respondents to indicate Hispanic ethnicity separately from racial origin and to identify more than one race category if applicable. The federal guidelines also require separating the category 'Asian or Pacific Islander' into two groups, one for 'Asian' and one for 'Native Hawaiian or Other Pacific Islander'.

All graduate level students have been placed into the Graduate College.

Cont. Studies/Contract includes all programs under the School of Continuing Studies and contract programs administered separately by the colleges.

AHS - Applied Health Sciences

LAS - Liberal Arts and Sciences

Section B: Student Demographic Characteristics

**Table 24: Distribution by Geographic Location
Fall 2010-2014**

		Chicago		Cook Co.		Illinois		Out of State		International		Total	
2010	Ugrad.	5,251	31.3%	10,863	64.7%	16,288	97.0%	260	1.5%	242	1.4%	16,790	100%
	Grad.	2,883	36.4%	4,151	52.4%	5,482	69.2%	1,025	12.9%	1,418	17.9%	7,925	100%
	Prof.	649	25.0%	1,180	45.5%	2,257	87.0%	304	11.7%	33	1.3%	2,594	100%
	CS/Contr.	121	22.4%	190	35.1%	228	42.1%	11	2.0%	302	55.8%	541	100%
	Total	8,904	32.0%	16,384	58.8%	24,255	87.1%	1,600	5.7%	1,995	7.2%	27,850	100%
2011	Ugrad.	5,257	31.1%	10,920	64.6%	16,349	96.7%	326	1.9%	236	1.4%	16,911	100%
	Grad.	2,752	34.3%	3,939	49.2%	5,338	66.6%	1,194	14.9%	1,480	18.5%	8,012	100%
	Prof.	630	23.7%	1,172	44.1%	2,290	86.2%	323	12.2%	44	1.7%	2,657	100%
	CS/Contr.	118	23.1%	181	35.4%	210	41.1%	30	5.9%	271	53.0%	511	100%
	Total	8,757	31.2%	16,212	57.7%	24,187	86.1%	1,873	6.7%	2,031	7.2%	28,091	100%
2012	Ugrad.	5,304	31.6%	10,907	65.0%	16,211	96.6%	304	1.8%	266	1.6%	16,781	100%
	Grad.	2,599	27.8%	3,715	39.7%	6,314	67.5%	1,347	14.4%	1,695	18.1%	9,356	100%
	Prof.	604	28.0%	1,162	53.8%	1,766	81.8%	347	16.1%	45	2.1%	2,158	100%
	CS/Contr.	86	19.9%	126	29.2%	212	49.1%	24	5.6%	196	45.4%	432	100%
	Total	8,593	29.9%	15,910	55.4%	24,503	85.3%	2,022	7.0%	2,202	7.7%	28,727	100%
2013	Ugrad.	5,486	32.9%	10,997	66.0%	15,999	96.0%	311	1.87%	350	2.1%	16,660	100%
	Grad.	2,551	31.2%	3,742	45.7%	5,076	62.0%	1,352	16.5%	1,748	21.4%	8,186	100%
	Prof.	613	22.3%	1,175	42.8%	2,340	85.3%	366	13.3%	37	1.3%	2,743	100%
	CS/Contr.	112	24.9%	160	35.6%	189	42.1%	24	5.35%	236	52.6%	449	100%
	Total	8,762	31.3%	16,074	57.3%	23,604	84.2%	2,053	7.32%	2,371	8.5%	28,038	100%
2014	Ugrad.	5,628	33.7%	11,088	66.4%	15,904	95.2%	388	2.32%	415	2.5%	16,707	100%
	Grad.	2,475	31.3%	3,584	45.3%	4,778	60.4%	1,260	15.93%	1,874	23.7%	7,912	100%
	Prof.	670	22.8%	1,273	43.2%	2,490	84.6%	404	13.72%	50	1.7%	2,944	100%
	CS/Contr.	61	15.0%	96	23.6%	114	28.1%	26	6.40%	266	65.5%	406	100%
	Total	8,834	31.6%	16,041	57.4%	23,286	83.3%	2,078	7.43%	2,605	9.3%	27,969	100%

Notes:

Geographic location is derived from permanent address for continuing students and permanent address at time of admittance for new students.

Cook County includes Chicago.

Continuing Studies/Contract includes all programs under the School of Continuing Studies and contract programs administered separately by the colleges.

Students who are in the U.S. on a visa or temporary basis are defined as International.

For this table International geographic location also includes online program students who are not citizens. (Online students outside the U.S. are reported under the race/ethnicity category of Unknown due to federal guidelines.)

Percentages may not add to 100 due to rounding.

Section B: Student Demographic Characteristics

**Table 25: Enrollment of Illinois Residents by County
Fall 2014**



Adams	13	Hardin	0	Morgan	8
Alexander	0	Henderson	1	Moultrie	2
Bond	2	Henry	14	Ogle	27
Boone	32	Iroquois	11	Peoria	116
Brown	0	Jackson	11	Perry	4
Bureau	9	Jasper	2	Piatt	8
Calhoun	0	Jefferson	3	Pike	1
Carroll	4	Jersey	4	Putnam	1
Cass	0	Jo Daviess	7	Randolph	1
Champaign	200	Johnson	1	Richland	2
Christian	9	Kane	571	Rock Island	56
Clark	1	Kankakee	47	St. Clair	36
Clay	1	Kendall	100	Saline	3
Clinton	4	Knox	7	Sangamon	50
Coles	11	Lake	1,115	Schuyler	1
Cook	16,041	LaSalle	35	Scott	0
Crawford	4	Lawrence	0	Shelby	4
Cumberland	1	Lee	16	Stark	2
DeKalb	56	Livingston	4	Stephenson	23
DeWitt	1	Logan	3	Tazewell	60
Douglas	6	Macon	30	Union	1
DuPage	2,383	Macoupin	6	Vermilion	20
Edgar	2	Madison	24	Wabash	1
Edwards	0	Marion	3	Warren	2
Effingham	6	Marshall	2	Washington	4
Fayette	2	Mason	5	Wayne	3
Ford	8	Massac	1	White	2
Franklin	1	McDonough	10	Whiteside	27
Fulton	5	McHenry	397	Will	1,185
Gallatin	1	McLean	58	Williamson	8
Greene	3	Menard	5	Winnebago	275
Grundy	23	Mercer	5	Woodford	20
Hamilton	0	Monroe	1	Unknown	0
Hancock	5	Montgomery	0	Total	23,286

Note:

Geographic location is derived from permanent address for continuing students and permanent address at time of admittance for new students.

Section B: Student Demographic Characteristics

**Table 26: U.S. Residents by State and Student Level
Fall 2014**

State	Ugrad.	Grad.	Prof.	C.S./ Contract	Total	State	Ugrad.	Grad.	Prof.	C.S./ Contract	Total
Alabama	2	4	1	0	7	New Mexico	2	7	2	0	11
Alaska	0	4	2	0	6	New York	10	61	19	2	92
Arizona	7	13	7	0	27	North Carolina	4	34	7	0	45
Arkansas	0	10	1	0	11	North Dakota	0	3	0	0	3
California	43	124	107	0	274	Ohio	23	72	14	0	109
Colorado	6	25	10	1	42	Oklahoma	1	7	0	0	8
Connecticut	4	22	4	0	30	Oregon	3	16	6	0	25
Delaware	0	2	0	0	2	Pennsylvania	7	35	7	0	49
Florida	20	60	19	0	99	Rhode Island	1	2	2	0	5
Georgia	10	43	5	0	58	South Carolina	3	15	0	0	18
Hawaii	4	2	5	0	11	South Dakota	0	7	1	0	8
Idaho	0	4	1	0	5	Tennessee	6	19	1	0	26
Illinois	15,904	4,778	2,490	114	23,286	Texas	18	54	14	1	87
Indiana	23	79	15	1	118	Utah	0	6	1	0	7
Iowa	9	40	11	1	61	Vermont	0	1	0	0	1
Kansas	1	4	1	0	6	Virginia	14	29	2	1	46
Kentucky	4	16	1	0	21	Washington	9	26	6	1	42
Louisiana	0	15	1	0	16	Washington, D.C.	3	8	1	2	14
Maine	1	2	0	1	4	West Virginia	0	0	0	0	0
Maryland	5	48	6	1	60	Wisconsin	21	62	17	0	100
Massachusetts	6	28	7	0	41	Wyoming	0	1	1	0	2
Michigan	30	85	36	4	155	Guam	1	0	0	0	1
Minnesota	18	31	14	0	63	Puerto Rico	0	6	2	0	8
Mississippi	0	3	0	0	3	British Columbia	0	1	0	0	1
Missouri	14	36	11	0	61	Ontario	2	9	0	0	11
Montana	0	0	0	0	0	Quebec	0	2	0	0	2
Nebraska	1	7	1	0	9	Other Country	18	17	8	0	43
Nevada	2	7	0	0	9	Other (Military)	1	3	1	0	5
New Hampshire	1	7	0	0	8	Unknown	21	17	17	10	65
New Jersey	10	27	9	0	46	Total	16,293	6,046	2,894	140	25,373

Notes:

State derived from permanent address for continuing students and permanent address at time of admittance for new students.

Cont. Studies/Contract includes all programs under the School of Continuing Studies and contract programs administered separately by the colleges.

International students (N=2,202) excluded. (See note on Table 24 for information about International students.)